

## Branch Saddles Large TEGA IPS/CTS/DIPS SERIES SDR11

Molded Electrofusion Large Branch Saddles

Suitable for Water, Fluids & Slurry's

Engineered for PE3408, PE4710 & PE100 HDPE Pipe Systems

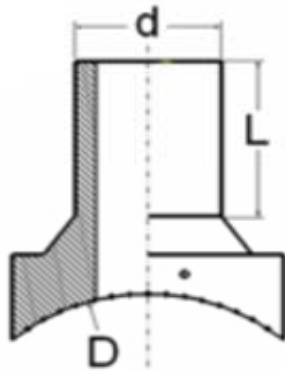
Manufactured in accordance with ASTM F-714, ASTM F-1055, ASTM D-2513

ASTM D-3035, ASTM D-3261, ASTM D-3350, AWWA C-901, AWWA C-906

DIN16963, EN1555, EN12201, ISO-9001/2000

Also Suitable For Use On IPS/DIPS SDR13.5, SDR15.5, SDR17 Series HDPE Pipe

**Also available with Brass and SS threaded outlet connections in Male & Female**



### IPS x IPS Large Branch Saddle

Nom Main Size (D)	Main Pipe	Outlet Nom Size (d)	Outlet Pipe	L (inches)	Unit Weight in lbs	PSI Operating Pressure	Item Code
3"	IPS	3"	IPS	3.54	1.32	200	30.BS1.11.11.11WW
4"	IPS	3"	IPS	3.54	1.32	240	30.BS1.11.11.1388
4"	IPS	4"	IPS	3.54	1.32	200	30.BS1.11.11.11XX
5"	IPS	3"	IPS	3.54	1.32	240	30.BS1.11.11.1388
5"	IPS	4"	IPS	3.54	2.65	240	30.BS1.11.11.1311
6"	IPS	3"	IPS	3.54	1.32	240	30.BS1.11.11.1688
6"	IPS	4"	IPS	3.54	2.65	240	30.BS1.11.11.1611
6"	IPS	5"	IPS	4.33	3.97	240	30.BS1.11.11.1613
6"	IPS	6"	IPS	4.33	3.97	200	30.BS1.11.11.16YY
7"	IPS	3"	IPS	3.54	1.32	240	30.BS1.11.11.1888
7"	IPS	4"	IPS	3.54	2.65	240	30.BS1.11.11.1811
7"	IPS	5"	IPS	4.33	3.97	240	30.BS1.11.11.1813
7"	IPS	6"	IPS	5.91	5.07	200	30.BS1.11.11.1816
8"	IPS	3"	IPS	3.54	1.32	240	30.BS1.11.11.2188
8"	IPS	4"	IPS	3.54	2.65	240	30.BS1.11.11.2111
8"	IPS	5"	IPS	4.33	3.97	240	30.BS1.11.11.2113
8"	IPS	6"	IPS	5.91	5.07	200	30.BS1.11.11.2116

8"	IPS	7"	IPS	5.91	5.07	200	30.BS1.11.11.2118
8"	IPS	8"	IPS	5.91	5.07	200	30.BS1.11.11.212Z
10"	IPS	3"	IPS	3.54	1.32	240	30.BS1.11.11.2788
10"	IPS	4"	IPS	3.54	2.65	240	30.BS1.11.11.2711
10"	IPS	5"	IPS	4.33	3.97	240	30.BS1.11.11.2713
10"	IPS	6"	IPS	5.91	5.07	200	30.BS1.11.11.2716
10"	IPS	7"	IPS	5.91	5.07	200	30.BS1.11.11.2718
10"	IPS	8"	IPS	5.91	9.92	160	30.BS1.11.11.2721

**IPS x IPS Large Branch Saddle**

Nom Main Size (D)	Main Pipe	Outlet Nom Size (d)	Outlet Pipe	L (inches)	Unit Weight in lbs	PSI Operating Pressure	Item Code
12"	IPS	3"	IPS	3.54	1.32	240	30.BS1.11.11.3288
12"	IPS	4"	IPS	3.54	2.65	240	30.BS1.11.11.3211
12"	IPS	5"	IPS	4.33	3.97	240	30.BS1.11.11.3213
12"	IPS	6"	IPS	5.91	5.07	200	30.BS1.11.11.3216
12"	IPS	7"	IPS	5.91	5.07	200	30.BS1.11.11.3218
12"	IPS	8"	IPS	5.91	9.92	200	30.BS1.11.11.3221
12"	IPS	10"	IPS	7.28	18.74	100	30.BS1.11.11.3227
14"	IPS	3"	IPS	3.54	1.32	240	30.BS1.11.11.3588
14"	IPS	4"	IPS	3.54	2.65	240	30.BS1.11.11.3511
14"	IPS	5"	IPS	4.33	3.97	240	30.BS1.11.11.3513
14"	IPS	6"	IPS	5.91	5.07	200	30.BS1.11.11.3516
14"	IPS	7"	IPS	5.91	5.07	200	30.BS1.11.11.3518
14"	IPS	8"	IPS	5.91	9.92	200	30.BS1.11.11.3521
14"	IPS	10"	IPS	7.28	18.74	100	30.BS1.11.11.3527
14"	IPS	12"	IPS	7.87	15.87	100	30.BS1.11.11.3532
16"	IPS	3"	IPS	3.54	1.32	240	30.BS1.11.11.4088
16"	IPS	4"	IPS	3.54	2.65	240	30.BS1.11.11.4011
16"	IPS	5"	IPS	4.33	3.97	240	30.BS1.11.11.4013
16"	IPS	6"	IPS	5.91	5.07	200	30.BS1.11.11.4016
16"	IPS	7"	IPS	5.91	5.07	200	30.BS1.11.11.4018
16"	IPS	8"	IPS	5.91	9.92	200	30.BS1.11.11.4021
16"	IPS	10"	IPS	7.28	18.74	100	30.BS1.11.11.4027
16"	IPS	12"	IPS	7.87	15.87	100	30.BS1.11.11.4032
16"	IPS	14"	IPS	7.87	19.35	50	30.BS1.11.11.4035
18"	IPS	3"	IPS	3.54	1.32	240	30.BS1.11.11.4588
18"	IPS	4"	IPS	3.54	2.65	240	30.BS1.11.11.4511
18"	IPS	5"	IPS	4.33	3.97	240	30.BS1.11.11.4513
18"	IPS	6"	IPS	5.91	5.07	200	30.BS1.11.11.4516
18"	IPS	7"	IPS	5.91	5.07	200	30.BS1.11.11.4518
18"	IPS	8"	IPS	5.91	9.92	200	30.BS1.11.11.4521
18"	IPS	10"	IPS	7.28	18.74	100	30.BS1.11.11.4527
18"	IPS	12"	IPS	7.87	15.87	100	30.BS1.11.11.4532
18"	IPS	14"	IPS	7.87	19.35	50	30.BS1.11.11.4535
18"	IPS	16"	IPS	9.05	24.85	50	30.BS1.11.11.4540

**IPS x IPS Large Branch Saddle**

Nom Main Size (D)	Main Pipe	Outlet Nom Size (d)	Outlet Pipe	L (inches)	Unit Weight in lbs	PSI Operating Pressure	Item Code
20"	IPS	3"	IPS	3.54	1.32	240	30.BS1.11.11.5088
20"	IPS	4"	IPS	3.54	2.65	240	30.BS1.11.11.5011
20"	IPS	5"	IPS	4.33	3.97	240	30.BS1.11.11.5013

20"	IPS	6"	IPS	5.91	5.07	200	30.BS1.11.11.5016
20"	IPS	7"	IPS	5.91	5.07	200	30.BS1.11.11.5018
20"	IPS	8"	IPS	5.91	9.92	200	30.BS1.11.11.5021
20"	IPS	10"	IPS	7.28	18.74	100	30.BS1.11.11.5027
20"	IPS	12"	IPS	7.87	15.87	100	30.BS1.11.11.5032
20"	IPS	14"	IPS	7.87	19.35	50	30.BS1.11.11.5035
20"	IPS	16"	IPS	9.05	24.85	50	30.BS1.11.11.5040
20"	IPS	18"	IPS	9.05	32.45	50	30.BS1.11.11.5045
22"	IPS	3"	IPS	3.54	1.32	240	30.BS1.11.11.5588
22"	IPS	4"	IPS	3.54	2.65	240	30.BS1.11.11.5511
22"	IPS	5"	IPS	4.33	3.97	240	30.BS1.11.11.5513
22"	IPS	6"	IPS	5.91	5.07	200	30.BS1.11.11.5516
22"	IPS	7"	IPS	5.91	5.07	200	30.BS1.11.11.5518
22"	IPS	8"	IPS	5.91	9.92	200	30.BS1.11.11.5521
22"	IPS	10"	IPS	7.28	18.74	100	30.BS1.11.11.5527
22"	IPS	12"	IPS	7.87	15.87	100	30.BS1.11.11.5532
22"	IPS	14"	IPS	7.87	19.35	50	30.BS1.11.11.5535
22"	IPS	16"	IPS	9.05	24.85	50	30.BS1.11.11.5540
22"	IPS	18"	IPS	9.05	32.45	50	30.BS1.11.11.5545
24"	IPS	3"	IPS	3.54	1.32	240	30.BS1.11.11.6088
24"	IPS	4"	IPS	3.54	2.65	240	30.BS1.11.11.6011
24"	IPS	5"	IPS	4.33	3.97	240	30.BS1.11.11.6013
24"	IPS	6"	IPS	5.91	5.07	200	30.BS1.11.11.6016
24"	IPS	7"	IPS	5.91	5.07	200	30.BS1.11.11.6018
24"	IPS	8"	IPS	5.91	9.92	200	30.BS1.11.11.6021
24"	IPS	10"	IPS	7.28	18.74	100	30.BS1.11.11.6027
24"	IPS	12"	IPS	7.87	15.87	100	30.BS1.11.11.6032
24"	IPS	14"	IPS	7.87	19.35	50	30.BS1.11.11.6035
24"	IPS	16"	IPS	9.05	24.85	50	30.BS1.11.11.6040
24"	IPS	18"	IPS	9.05	32.45	50	30.BS1.11.11.6045
24"	IPS	20"	IPS	9.05	28.6	50	30.BS1.11.11.6050

### IPS x IPS Large Branch Saddle

Nom Main Size (D)	Main Pipe	Outlet Nom Size (d)	Outlet Pipe	L (inches)	Unit Weight in lbs	PSI Operating Pressure	Item Code
30"	IPS	3"	IPS	3.54	1.32	240	30.BS1.11.11.7688
30"	IPS	4"	IPS	3.54	2.65	240	30.BS1.11.11.7611
30"	IPS	5"	IPS	4.33	3.97	240	30.BS1.11.11.7613
30"	IPS	6"	IPS	5.91	5.07	200	30.BS1.11.11.7616
30"	IPS	7"	IPS	5.91	5.07	200	30.BS1.11.11.7618
30"	IPS	8"	IPS	5.91	9.92	200	30.BS1.11.11.7621
30"	IPS	10"	IPS	7.28	18.74	100	30.BS1.11.11.7627
30"	IPS	12"	IPS	7.87	15.87	100	30.BS1.11.11.7632
30"	IPS	14"	IPS	7.87	19.35	50	30.BS1.11.11.7635
30"	IPS	16"	IPS	9.05	24.85	50	30.BS1.11.11.7640
30"	IPS	18"	IPS	9.05	32.45	50	30.BS1.11.11.7645
30"	IPS	20"	IPS	9.05	28.6	50	30.BS1.11.11.7650
32"	IPS	3"	IPS	3.54	1.32	240	30.BS1.11.11.8188
32"	IPS	4"	IPS	3.54	2.65	240	30.BS1.11.11.8111
32"	IPS	5"	IPS	4.33	3.97	240	30.BS1.11.11.8113
32"	IPS	6"	IPS	5.91	5.07	200	30.BS1.11.11.8116
32"	IPS	7"	IPS	5.91	5.07	200	30.BS1.11.11.8118
32"	IPS	8"	IPS	5.91	9.92	200	30.BS1.11.11.8121

32"	IPS	10"	IPS	7.28	18.74	100	30.BS1.11.11.8127
32"	IPS	12"	IPS	7.87	15.87	100	30.BS1.11.11.8132
32"	IPS	14"	IPS	7.87	19.35	50	30.BS1.11.11.8135
32"	IPS	16"	IPS	9.05	24.85	50	30.BS1.11.11.8140
32"	IPS	18"	IPS	9.05	32.45	50	30.BS1.11.11.8145
32"	IPS	20"	IPS	9.05	28.6	50	30.BS1.11.11.8150
36"	IPS	3"	IPS	3.54	1.32	240	30.BS1.11.11.9188
36"	IPS	4"	IPS	3.54	2.65	240	30.BS1.11.11.9111
36"	IPS	5"	IPS	4.33	3.97	240	30.BS1.11.11.9113
36"	IPS	6"	IPS	5.91	5.07	200	30.BS1.11.11.9116
36"	IPS	7"	IPS	5.91	5.07	200	30.BS1.11.11.9118
36"	IPS	8"	IPS	5.91	9.92	20	30.BS1.11.11.9121
36"	IPS	10"	IPS	7.28	18.74	100	30.BS1.11.11.9127
36"	IPS	12"	IPS	7.87	15.87	100	30.BS1.11.11.9132
36"	IPS	14"	IPS	7.87	19.35	50	30.BS1.11.11.9135
36"	IPS	16"	IPS	9.05	24.85	50	30.BS1.11.11.9140
36"	IPS	18"	IPS	9.05	32.45	50	30.BS1.11.11.9145
36"	IPS	20"	IPS	9.05	28.6	50	30.BS1.11.11.9150

**IPS x IPS Large Branch Saddle**

Nom Main Size (D)	Main Pipe	Outlet Nom Size (d)	Outlet Pipe	L (inches)	Unit Weight in lbs	PSI Operating Pressure	Item Code
1000 mm.	IPS	3"	IPS	3.54	1.32	240	30.BS1.11.11.1088
1000 mm.	IPS	4"	IPS	3.54	2.65	240	30.BS1.11.11.1011
1000 mm.	IPS	5"	IPS	4.33	3.97	240	30.BS1.11.11.1013
1000 mm.	IPS	6"	IPS	5.91	5.07	200	30.BS1.11.11.1016
1000 mm.	IPS	7"	IPS	5.91	5.07	200	30.BS1.11.11.1018
1000 mm.	IPS	8"	IPS	5.91	9.92	200	30.BS1.11.11.1021
1000 mm.	IPS	10"	IPS	7.28	18.74	100	30.BS1.11.11.1027
1000 mm.	IPS	12"	IPS	7.87	15.87	100	30.BS1.11.11.1032
1000 mm.	IPS	14"	IPS	7.87	19.35	50	30.BS1.11.11.1035
1000 mm.	IPS	16"	IPS	9.05	24.85	50	30.BS1.11.11.1040
1000 mm.	IPS	18"	IPS	9.05	32.45	50	30.BS1.11.11.1045
1000 mm.	IPS	20"	IPS	9.05	28.6	50	30.BS1.11.11.1050
42"	IPS	3"	IPS	3.54	1.32	240	30.BS1.11.11.10688
42"	IPS	4"	IPS	3.54	2.65	240	30.BS1.11.11.10611
42"	IPS	5"	IPS	4.33	3.97	240	30.BS1.11.11.10613
42"	IPS	6"	IPS	5.91	5.07	200	30.BS1.11.11.10616
42"	IPS	7"	IPS	5.91	5.07	200	30.BS1.11.11.10618
42"	IPS	8"	IPS	5.91	9.92	200	30.BS1.11.11.10621
42"	IPS	10"	IPS	7.28	18.74	100	30.BS1.11.11.10627
42"	IPS	12"	IPS	7.87	15.87	100	30.BS1.11.11.10632
42"	IPS	14"	IPS	7.87	19.35	50	30.BS1.11.11.10635
42"	IPS	16"	IPS	9.05	24.85	50	30.BS1.11.11.10640
42"	IPS	18"	IPS	9.05	32.45	50	30.BS1.11.11.10645
42"	IPS	20"	IPS	9.05	28.6	50	30.BS1.11.11.10650
48"	IPS	3"	IPS	3.54	1.32	240	30.BS1.11.11.12188
48"	IPS	4"	IPS	3.54	2.65	240	30.BS1.11.11.12111
48"	IPS	5"	IPS	4.33	3.97	240	30.BS1.11.11.12113
48"	IPS	6"	IPS	5.91	5.07	200	30.BS1.11.11.12116
48"	IPS	7"	IPS	5.91	5.07	200	30.BS1.11.11.12118
48"	IPS	8"	IPS	5.91	9.92	200	30.BS1.11.11.12121
48"	IPS	10"	IPS	7.28	18.74	100	30.BS1.11.11.12127

48"	IPS	12"	IPS	7.87	15.87	100	30.BS1.11.11.12132
48"	IPS	14"	IPS	7.87	19.35	50	30.BS1.11.11.12135
48"	IPS	16"	IPS	9.05	24.85	50	30.BS1.11.11.12140
48"	IPS	18"	IPS	9.05	32.45	50	30.BS1.11.11.12145
48"	IPS	20"	IPS	9.05	28.6	50	30.BS1.11.11.12150

### IPS x IPS Large Branch Saddle

Nom Main Size (D)	Main Pipe	Outlet Nom Size (d)	Outlet Pipe	L (inches)	Unit Weight in lbs	PSI Operating Pressure	Item Code
54"	IPS	3"	IPS	3.54	1.32	240	30.BS1.11.11.13788
54"	IPS	4"	IPS	3.54	2.65	240	30.BS1.11.11.13711
54"	IPS	5"	IPS	4.33	3.97	240	30.BS1.11.11.13713
54"	IPS	6"	IPS	5.91	5.07	200	30.BS1.11.11.13716
54"	IPS	7"	IPS	5.91	5.07	200	30.BS1.11.11.13718
54"	IPS	8"	IPS	5.91	9.92	200	30.BS1.11.11.13721
54"	IPS	10"	IPS	7.28	18.74	100	30.BS1.11.11.13727
54"	IPS	12"	IPS	7.87	15.87	100	30.BS1.11.11.13732
54"	IPS	14"	IPS	7.87	19.35	50	30.BS1.11.11.13735
54"	IPS	16"	IPS	9.05	24.85	50	30.BS1.11.11.13735
54"	IPS	18"	IPS	9.05	32.45	50	30.BS1.11.11.13735
54"	IPS	20"	IPS	9.05	28.6	50	30.BS1.11.11.13735
63"	IPS	3"	IPS	3.54	1.32	240	30.BS1.11.11.16088
63"	IPS	4"	IPS	3.54	2.65	240	30.BS1.11.11.16011
63"	IPS	5"	IPS	4.33	3.97	240	30.BS1.11.11.16013
63"	IPS	6"	IPS	5.91	5.07	200	30.BS1.11.11.16016
63"	IPS	7"	IPS	5.91	5.07	200	30.BS1.11.11.16018
63"	IPS	8"	IPS	5.91	9.92	200	30.BS1.11.11.16021
63"	IPS	10"	IPS	7.28	18.74	100	30.BS1.11.11.16027
63"	IPS	12"	IPS	7.87	15.87	100	30.BS1.11.11.16032
63"	IPS	14"	IPS	7.87	19.35	50	30.BS1.11.11.16035
63"	IPS	16"	IPS	9.05	24.85	50	30.BS1.11.11.16040
63"	IPS	18"	IPS	9.05	32.45	50	30.BS1.11.11.16045
63"	IPS	20"	IPS	9.05	28.6	50	30.BS1.11.11.16050

### DIPS x DIPS Large Branch Saddle

Nom Main Size (D)	Main Pipe	Outlet Nom Size (d)	Outlet Pipe	L (inches)	Unit Weight in lbs	PSI Operating Pressure	Item Code
4"	DIPS	3"	DIPS	TBA	TBA	240	30.BS1.22.11.1210
6"	DIPS	3"	DIPS	TBA	TBA	240	30.BS1.22.11.1710
6"	DIPS	4"	DIPS	3.54	2.65	240	30.BS1.22.11.1712
8"	DIPS	4"	DIPS	3.54	2.65	240	30.BS1.22.11.2212
8"	DIPS	6"	DIPS	5.91	5.07	200	30.BS1.22.11.2217
10"	DIPS	4"	DIPS	3.54	2.65	240	30.BS1.22.11.2812
10"	DIPS	6"	DIPS	5.91	5.07	200	30.BS1.22.11.2817
12"	DIPS	4"	DIPS	3.54	2.65	240	30.BS1.22.11.3312
12"	DIPS	6"	DIPS	5.91	5.07	100	30.BS1.22.11.3317
14"	DIPS	4"	DIPS	3.54	2.65	240	30.BS1.22.11.3812
14"	DIPS	6"	DIPS	5.91	5.07	200	30.BS1.22.11.3817
14"	DIPS	12"	DIPS	7.87	42.77	100	30.BS1.22.11.3833
16"	DIPS	3"	DIPS	TBA	TBA	240	TBA
16"	DIPS	4"	DIPS	3.54	2.65	240	30.BS1.22.11.4412
16"	DIPS	6"	DIPS	5.91	5.07	200	30.BS1.22.11.4417
16"	DIPS	12"	DIPS	7.87	42.77	100	30.BS1.22.11.4433

16"	DIPS	14"	DIPS	8.27	59.3	50	30.BS1.22.11.4438
18"	DIPS	4"	DIPS	3.54	2.65	240	30.BS1.22.11.4912
18"	DIPS	6"	DIPS	5.91	5.07	200	30.BS1.22.11.4917
18"	DIPS	12"	DIPS	7.87	42.77	100	30.BS1.22.11.4933
18"	DIPS	14"	DIPS	8.27	59.3	50	30.BS1.22.11.4938
18"	DIPS	16"	DIPS	9.06	77.71	50	TBA
20"	DIPS	4"	DIPS	3.54	2.65	240	30.BS1.22.11.5412
20"	DIPS	6"	DIPS	5.91	5.07	200	30.BS1.22.11.5417
20"	DIPS	12"	DIPS	7.87	42.77	100	30.BS1.22.11.5433
20"	DIPS	14"	DIPS	8.27	59.3	50	30.BS1.22.11.5438
20"	DIPS	16"	DIPS	9.06	77.71	50	30.BS1.22.11.5444
20"	DIPS	18"	DIPS	9.65	110.8	50	30.BS1.22.11.5449
24"	DIPS	4"	DIPS	3.54	2.65	240	30.BS1.22.11.6512
24"	DIPS	6"	DIPS	5.91	5.07	200	30.BS1.22.11.6517
24"	DIPS	12"	DIPS	7.87	42.77	100	30.BS1.22.11.6533
24"	DIPS	14"	DIPS	8.27	59.3	50	30.BS1.22.11.6538
24"	DIPS	16"	DIPS	9.06	77.71	50	30.BS1.22.11.6544
24"	DIPS	18"	DIPS	9.65	110.8	50	30.BS1.22.11.6549

**DIPS x DIPS Large Branch Saddle**

Nom Main Size (D)	Main Pipe	Outlet Nom Size (d)	Outlet Pipe	L (inches)	Unit Weight in lbs	PSI Operating Pressure	Item Code
30"	DIPS	4"	DIPS	3.54	2.65	240	30.BS1.22.11.8112
30"	DIPS	6"	DIPS	5.91	5.07	200	30.BS1.22.11.8117
30"	DIPS	12"	DIPS	7.87	42.77	100	30.BS1.22.11.8133
30"	DIPS	14"	DIPS	8.27	59.3	50	30.BS1.22.11.8138
30"	DIPS	16"	DIPS	9.06	77.71	50	30.BS1.22.11.8144
30"	DIPS	18"	DIPS	9.65	110.8	50	30.BS1.22.11.8149
36"	DIPS	4"	DIPS	3.54	2.65	240	30.BS1.22.11.9712
36"	DIPS	6"	DIPS	5.91	5.07	200	30.BS1.22.11.9717
36"	DIPS	12"	DIPS	7.87	42.77	100	30.BS1.22.11.9733
36"	DIPS	14"	DIPS	8.27	59.3	50	30.BS1.22.11.9738
36"	DIPS	16"	DIPS	9.06	77.71	50	30.BS1.22.11.9744
36"	DIPS	18"	DIPS	9.65	110.8	50	30.BS1.22.11.9749
42"	DIPS	4"	DIPS	3.54	2.65	240	30.BS1.22.11.11312
42"	DIPS	6"	DIPS	5.91	5.07	200	30.BS1.22.11.11317
42"	DIPS	12"	DIPS	7.87	42.77	100	30.BS1.22.11.11333
42"	DIPS	14"	DIPS	8.27	59.3	50	30.BS1.22.11.11338
42"	DIPS	16"	DIPS	9.06	77.71	50	30.BS1.22.11.11344
42"	DIPS	18"	DIPS	9.65	110.8	50	30.BS1.22.11.11349
48"	DIPS	4"	DIPS	3.54	2.65	240	30.BS1.22.11.12912
48"	DIPS	6"	DIPS	5.91	5.07	200	30.BS1.22.11.12917
48"	DIPS	12"	DIPS	7.87	42.77	100	30.BS1.22.11.12933
48"	DIPS	14"	DIPS	8.27	59.3	50	30.BS1.22.11.12938
48"	DIPS	16"	DIPS	9.06	77.71	50	30.BS1.22.11.12944
48"	DIPS	18"	DIPS	9.65	110.8	50	30.BS1.22.11.12949

**STRONGBRIDGE INTERNATIONAL INC.**

10920 Baymeadows Road, Unit 27-302  
 Jacksonville, FL 32256  
 Phone: (904) 607-6384 Fax:(904) 565-2776  
[www.strongbridge.us](http://www.strongbridge.us)

**STRONGBRIDGE INTERNATIONAL (CANADA) INC.**

200 North Service Road West, Unit 1 Suite 381  
 Oakville, Ontario L6M 2Y1  
 Phone (416) 795-8962  
[www.strongbridgecanada.com](http://www.strongbridgecanada.com)

**TEGA ELECTROFUSION FITTINGS MAY ONLY BE INSTALLED BY TECHICIANS CERTIFIED BY STRONGBRIDGE INTERNATIONAL INC. OR ITS DESIGNATED AND APPROVED AGENTS. CONTACT STRONGBRIDGE INTERNATIONAL FOR CURRENT CERTIFICATION DETAILS AND REQUIREMENTS.**

Copyright 2009 Strongbridge International Inc. All rights reserved. Information subject to change without notice. E. & O.E.  
Subject to Strongbridge International Inc. Limited Warranty, available at [www.strongbridge.us](http://www.strongbridge.us)

09/09